

# PowerPoint 2003

Manual - Intermediate Level



SAMPLE

© 1995-2010 Cheltenham Courseware Pty. Ltd.

All trademarks acknowledged. E&OE.

No part of this document may be copied without written permission from Cheltenham Courseware unless produced under the terms of a courseware site license agreement with Cheltenham Courseware.

All reasonable precautions have been taken in the preparation of this document, including both technical and non-technical proofing. Cheltenham Courseware and all staff assume no responsibility for any errors or omissions. No warranties are made, expressed or implied with regard to these notes. Cheltenham Courseware shall not be responsible for any direct, incidental or consequential damages arising from the use of any material contained in this document. If you find any errors in these training modules, please inform Cheltenham Courseware. Whilst every effort is made to eradicate typing or technical mistakes, we apologise for any errors you may detect. All courses are updated on a regular basis, so your feedback is both valued by us and will help us to maintain the highest possible standards.

#### **Sample versions of courseware from Cheltenham Courseware**

(Normally supplied in Adobe Acrobat format): If the version of courseware that you are viewing is marked as NOT FOR TRAINING, SAMPLE, or similar, then it cannot be used as part of a training course, and is made available purely for content and style review. This is to give you the opportunity to preview our courseware, prior to making a purchasing decision. Sample versions may not be re-sold to a third party.

#### **For current license information**

This document may only be used under the terms of the license agreement from Cheltenham Courseware. Cheltenham Courseware reserves the right to alter the licensing conditions at any time, without prior notice. Please see the site license agreement available at: [www.cheltenhamcourseware.com.au/agreement](http://www.cheltenhamcourseware.com.au/agreement)

#### **Contact Information**

##### **Australia / Asia Pacific / Europe (ex. UK) / Rest of the World**

Email: [info@cheltenhamcourseware.com.au](mailto:info@cheltenhamcourseware.com.au)  
Web: [www.cheltenhamcourseware.com.au](http://www.cheltenhamcourseware.com.au)

##### **USA / Canada**

Email: [info@cheltenhamcourseware.com](mailto:info@cheltenhamcourseware.com)  
Web: [www.cheltenhamcourseware.com](http://www.cheltenhamcourseware.com)

##### **UK**

Email: [info@cctglobal.com](mailto:info@cctglobal.com)  
Web: [www.cctglobal.com](http://www.cctglobal.com)



# SAMPLE

<b>INSTALLING THE SAMPLE FILES.....</b>	<b>4</b>
<b>CREATING A PHOTO ALBUM.....</b>	<b>5</b>
ADDING ALBUM CONTENT.....	5
CHOOSING AN ALBUM LAYOUT.....	7
FORMATTING THE ALBUM.....	9
REVIEW QUESTIONS.....	11
<b>USING DIAGRAMS AND ORGANIZATION CHARTS .....</b>	<b>12</b>
ADDING ORGANIZATION CHARTS AND DIAGRAMS.....	12
WORKING WITH ORGANIZATION CHARTS .....	15
WORKING WITH DIAGRAMS.....	17
FORMATTING ORGANIZATION CHARTS AND DIAGRAMS .....	20
REVIEW QUESTIONS.....	22
<b>USING TABLES AND CHARTS .....</b>	<b>23</b>
ADDING TABLES.....	23
WORKING WITH COLUMNS AND ROWS.....	25
FORMATTING TABLES.....	28
ADDING CHARTS.....	30
ENTERING DATA.....	32
CHANGING THE CHART TYPE.....	33
CUSTOMISING CHARTS.....	36
REVIEW QUESTIONS.....	40
<b>EMBEDDING AND LINKING OBJECTS .....</b>	<b>42</b>
WORKING WITH LINKED OBJECTS.....	42
WORKING WITH EMBEDDED OBJECTS.....	45
WORKING WITH HYPERLINKS.....	47
REVIEW QUESTIONS.....	51
<b>APPLYING CUSTOM ANIMATION .....</b>	<b>52</b>
ADDING EFFECTS.....	52
EDITING ANIMATION EFFECTS .....	57
APPLYING ANIMATION ENHANCEMENTS.....	61
ADDING SLIDE TRANSITIONS.....	66
REVIEW QUESTIONS.....	68
<b>USING MOVIES, SOUNDS, AND VOICE NARRATIONS .....</b>	<b>70</b>
ADDING MOVIES.....	70
ADDING SOUNDS.....	73
ADDING VOICE NARRATIONS.....	76
REVIEW QUESTIONS.....	78
<b>USING MACROS.....</b>	<b>79</b>
CREATING MACROS .....	79
MANAGING MACROS.....	80
SETTING MACRO SECURITY.....	83
REVIEW QUESTIONS.....	84

## Installing the Sample Files

- Use Windows Explorer to create a folder called **PowerPoint 2003 Intermediate Samples**, in the **My Documents** folder.
- If you are installing the sample files from the CD-ROM, place the CD-ROM in the CD drive and copy the files from the **powerpoint\_2003\_intermediate\_eur\exercise\_files** to the **My Documents\PowerPoint 2003 Intermediate Samples** folder. If these files have been copied to your network server, then ask your trainer/supervisor for more information about how to copy these files to your PC's hard disk.
- **Notes for tutors:**  
The above instructions are for Windows that has not been set-up for a multi-user environment (with individual profiles). The instructions above may require modification within a Windows multi-user environment. Where possible pre-install the relevant work files prior to use by students/delegates.

SAMPLE

## Creating a Photo Album

When you have completed this learning module you will have seen how to:

- Create a New Photo Album
- Insert Pictures from a File or Disk
- Insert Pictures from a Scanner or Camera
- Insert a Text Box
- Insert Captions
- Change all Pictures to Black and White
- Add a Picture Layout
- Choose a Frame Shape
- Add a Design Template
- Apply Changes to a Photo Album
- Add Text and Edit Captions
- Make Changes with the Format Photo Album Dialog Box
- Change Picture Order
- Rotate Pictures
- Adjust Picture Contrast
- Adjust Picture Brightness

## Adding Album Content

---

### Creating a New Photo Album

- The PowerPoint 2003 **Photo Album** feature offers an easy way to create a presentation of pictures. You can select different **layouts**, apply **design templates**, add **captions** and **text boxes**, and modify your **pictures**. Creating a Photo Album generates a new file so your current presentation will not be affected.

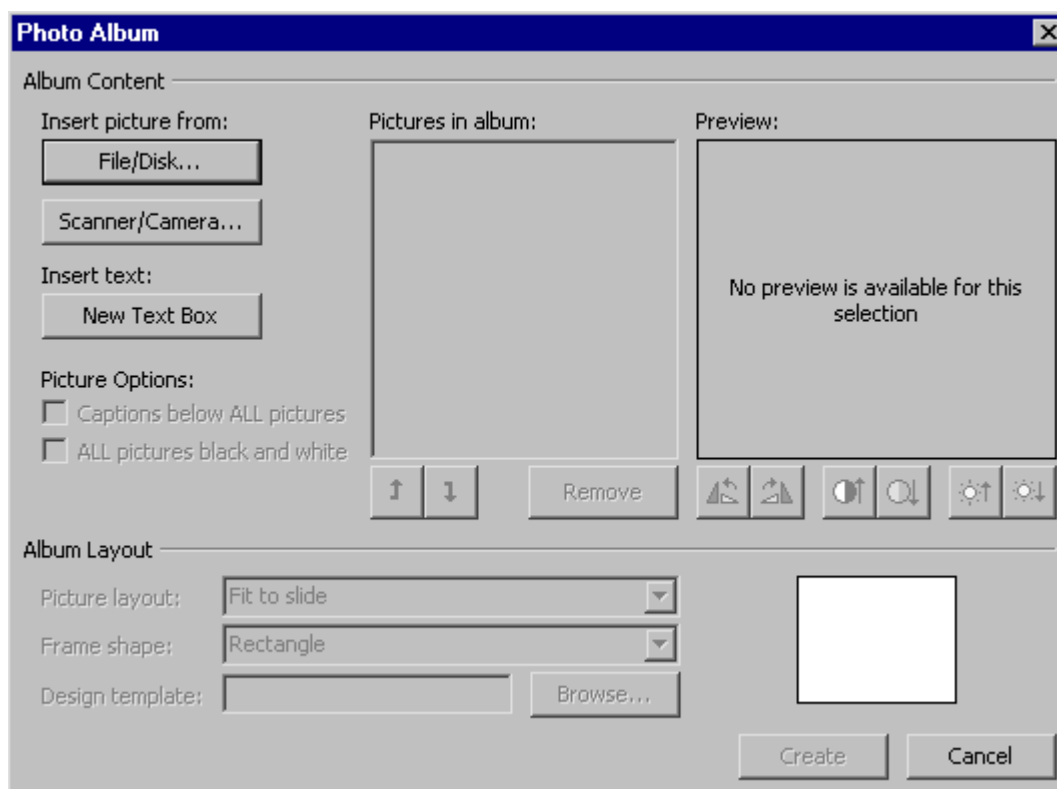
---

### To create a new photo album

- From the main menu, select **File > New** to open the New Presentation task pane.

SAMPLE

- Choose Photo Album to open the **Photo Album** dialog box:



---

### Inserting Pictures from a File or Disk

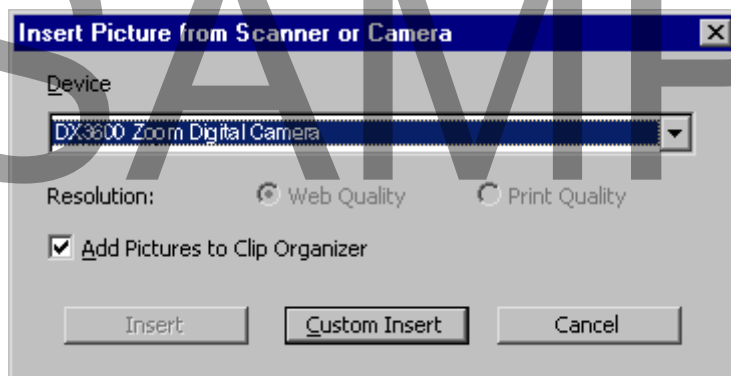
- Click the **File/Disk** button in the **Album Content** area.
- Locate the picture you want and click **Insert**.

**Note:** Repeat this step to add additional pictures from a **file** or **disk**.

---

### Inserting Pictures from a Scanner or Camera

- Click the **Scanner/Camera** button in the **Album Content** area. This opens the **Insert Picture from Scanner or Camera** dialog box:



- Select the device from the drop-down menu which contains the pictures you want.

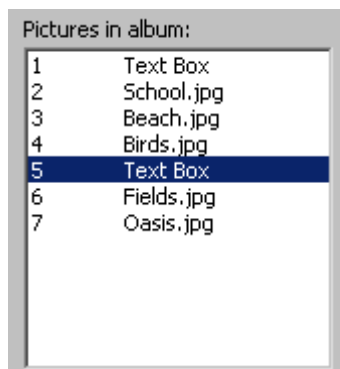
- Click the **Custom Insert** button.
- Locate the picture/s you want and click **Get Picture**.

**Note:** If you don't want your pictures added to the **Clip Organizer**, uncheck the **Add Pictures to Clip Organizer** box.

---

### Inserting a Text Box

- Select the picture you want the text box to appear **after**.
- Click the **New Text Box** button in the **Album Content** area:



**Note:** The size of the text box is determined by the **Picture Layout**. The text box placeholder will be the same size as the picture placeholder as illustrated in the Picture Layout.

---

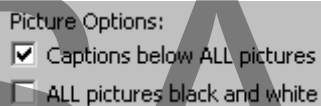
### Inserting Captions

- Captions add a text box underneath each picture. By default, captions are the file name of the picture. You can edit captions in **Normal** view.

---

#### To insert captions

- Check the **Captions below ALL pictures** box in the **Album Content** area:



---

#### Changing all Pictures to Black and White

- Check the **ALL pictures black and white** box in the **Album Content** area.

---

### Choosing an Album Layout

---

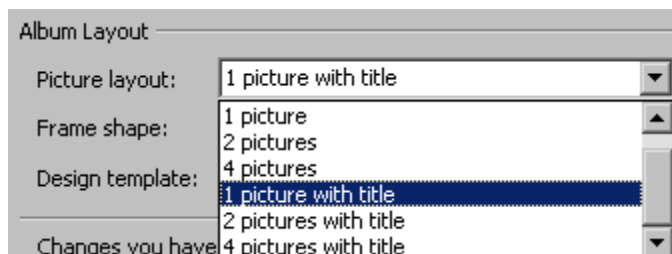
## Adding a Picture Layout

- The **Picture Layout** determines the layout of pictures and text on each slide.

---

### To add a picture layout

- Select the layout you want from the **Picture layout** drop-down menu:



**Note:** You **cannot** add captions to pictures, add frame shapes, or add a design template if you select the **Fit to Slide** layout.

---

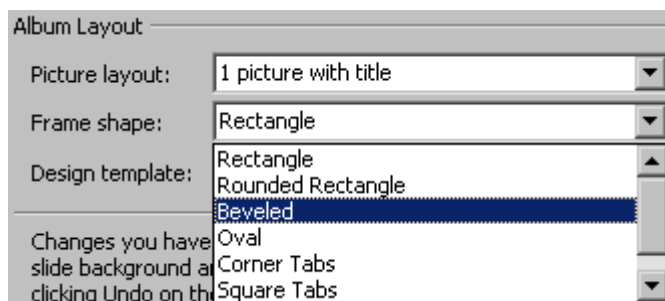
## Choosing a Frame Shape

- Choosing a **frame shape** adds a frame to all of your pictures.

---

### To add a frame shape

- Select the frame you want from the **Frame shape** drop-down menu:



---

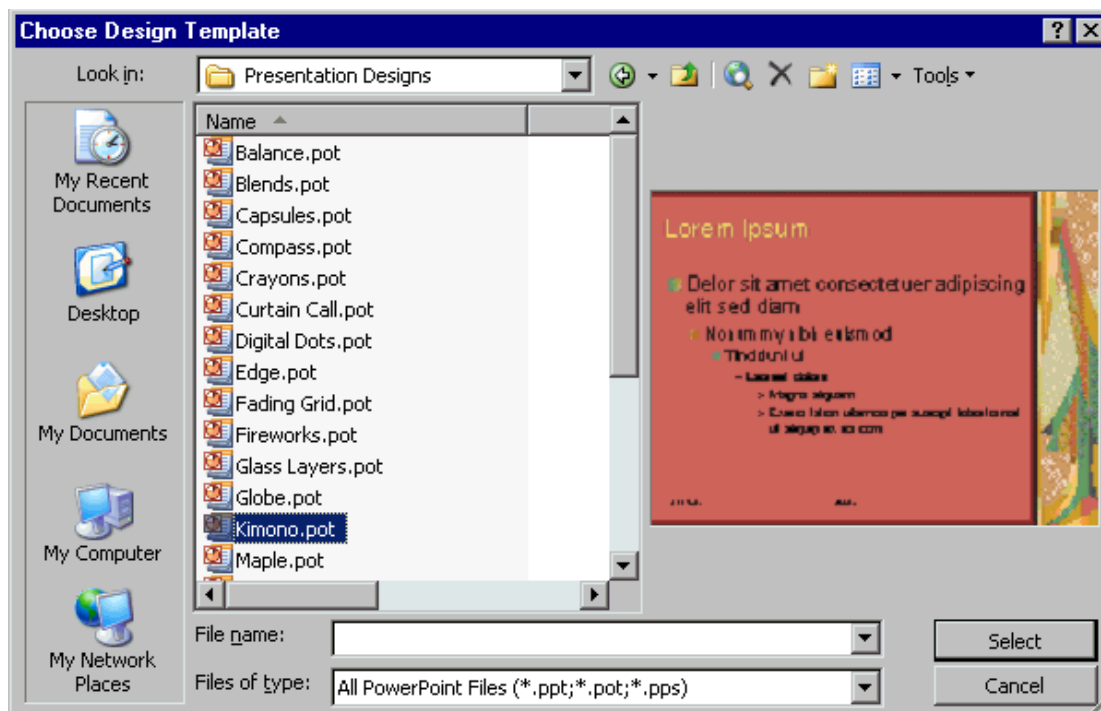
## Adding a Design Template

- **Design Templates** offer a quick and easy way to provide an attractive and interesting background to your Photo Album.

---

### To apply a design template

- Click the **Browse** button next to the **Design template** box. This opens the **Choose Design Template** dialog box:



- Locate the design template you want and click **Select**.

---

### Applying Changes to a Photo Album

- When you have finished customising the album content and layout, click **Create**.

### Formatting the Album

---

#### Adding Text and Editing Captions

- If you added **text boxes** or **captions** during the set up of your Photo Album, you can edit these placeholders in **Normal** view.

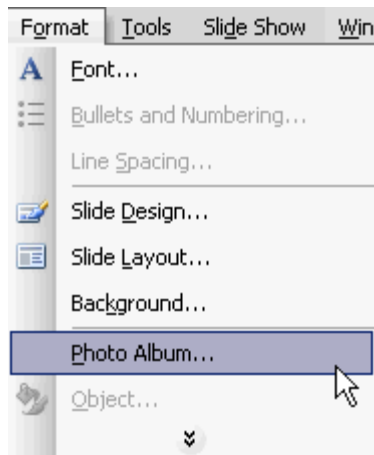
---

#### Making Changes with the Format Photo Album Dialog Box

- You can make changes to your Photo Album with the **Format Photo Album** dialog box.

SAMPLE

- From the main menu, select **Format > Photo Album**.

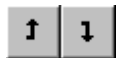


- Make the changes you want.
- Click **Update**.

---

### Changing Picture Order

- In the **Format Photo Album** dialog box, select the picture you want to move.
- Click the **up** or **down arrow** to move the picture to its new location:



---

### Rotating Pictures

- In the **Format Photo Album** dialog box, select the picture you want to rotate.
- Click the **rotate left** or **rotate right** button until you reach the angle you want:



---

### Adjusting Picture Contrast

- In the **Format Photo Album** dialog box, select the picture you want to change the contrast of.
- Click the **more contrast** or **less contrast** button until you reach the contrast you want:



## Adjusting Picture Brightness

- In the **Format Photo Album** dialog box, select the picture you want to change the brightness of.
- Click the **more brightness** or **less brightness** button until you reach the brightness you want:



## Review Questions

### How would you:

- Create a New Photo Album?
- Insert Pictures from a File or Disk?
- Insert Pictures from a Scanner or Camera?
- Insert a Text Box?
- Insert Captions?
- Change all Pictures to Black and White?
- Add a Picture Layout?
- Choose a Frame Shape?
- Add a Design Template?
- Apply Changes to a Photo Album?
- Add Text and Edit Captions?
- Make Changes with the Format Photo Album Dialog Box?
- Change Picture Order?
- Rotate Pictures?
- Adjust Picture Contrast?
- Adjust Picture Brightness?

SAMPLE

## Using Diagrams and Organization Charts

When you have completed this learning module you will have seen how to:

- Insert an Organization Chart
- Insert a Cycle Diagram
- Insert a Radial Diagram
- Insert a Pyramid Diagram
- Insert a Venn Diagram
- Insert a Target Diagram
- Insert Organization Chart Shapes
- Delete Organization Chart Shapes
- Select Related Organization Chart Shapes
- Change the Organization Chart Layout
- Resize an Organization Chart
- Add a Preset Design Scheme to an Organization Chart
- Add Diagram Shapes
- Delete Diagram Shapes
- Move Shapes within a Diagram
- Reverse a Diagram
- Resize a Diagram
- Add a Preset Design Scheme to a Diagram
- Switch Between Diagram Types
- Enter Text in an Organization Chart or Diagram
- Format an Organization Chart or Diagram
- Format Organization Chart or Diagram AutoShapes
- Delete an Organization Chart or Diagram

## Adding Organization Charts and Diagrams

### Inserting an Organization Chart

- Organization charts are useful to show hierarchical relationships within an organization.

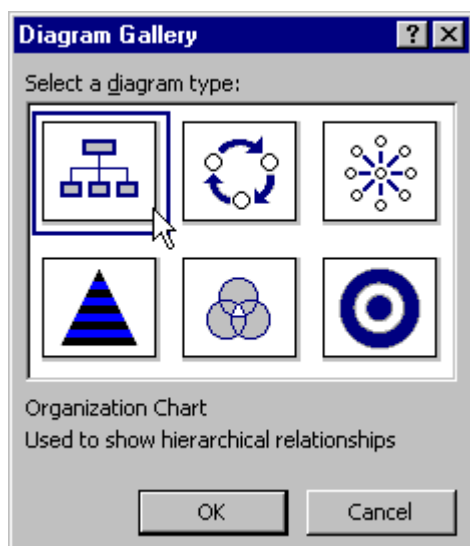
#### To insert an organization chart

- From the main menu, select **Insert > Diagram**

**OR** click the **Insert Diagram or Organization Chart** button on the **Drawing** toolbar or on the slide **Content** placeholder:



- This opens the **Diagram Gallery** dialog box:



- Select the **Organization Chart** in the **Select a diagram type** box.
- Click **OK**.

---

### Using Diagram Types

- PowerPoint offers five types of diagrams including the **Cycle Diagram**, **Radial Diagram**, **Pyramid Diagram**, **Venn Diagram**, and **Target Diagram**. Diagrams are useful for visually illustrating points in presentations.

---

### Inserting a Cycle Diagram

- Cycle diagrams are useful for illustrating processes which have a continuous cycle.

---

#### To insert a Cycle diagram

- Click the **Insert Diagram or Organization Chart** button on the **Drawing** toolbar or on the slide **Content placeholder**. This opens the **Diagram Gallery** dialog box.
- Select the **Cycle Diagram** in the **Select a diagram type** box:



- Click **OK**.

---

### Inserting a Radial Diagram

- Radial diagrams are useful for illustrating core element relationships.

### To insert a Radial diagram

- Click the **Insert Diagram or Organization Chart** button on the **Drawing** toolbar or on the slide **Content placeholder**. This opens the **Diagram Gallery** dialog box.
- Select the **Radial Diagram** in the **Select a diagram type** box:



- Click **OK**.

### Inserting a Pyramid Diagram

- Pyramid diagrams are useful for illustrating foundation-based relationships.

### To insert a Pyramid diagram

- Click the **Insert Diagram or Organization Chart** button on the **Drawing** toolbar or on the slide **Content placeholder**. This opens the **Diagram Gallery** dialog box.
- Select the **Pyramid Diagram** in the **Select a diagram type** box:



- Click **OK**.

### Inserting a Venn Diagram

- Venn diagrams are useful for illustrating overlapping elements.

### To insert a Venn diagram

- Click the **Insert Diagram or Organization Chart** button on the **Drawing** toolbar or on the slide **Content placeholder**. This opens the **Diagram Gallery** dialog box.
- Select the **Venn Diagram** in the **Select a diagram type** box:



- Click **OK**.

### Inserting a Target Diagram

- Target diagrams are useful for illustrating steps towards a goal.

### To insert a Target diagram

- Click the **Insert Diagram or Organization Chart** button on the **Drawing** toolbar or on the slide **Content placeholder**. This opens the **Diagram Gallery** dialog box.
- Select the **Target Diagram** in the **Select a diagram type** box:



- Click **OK**.

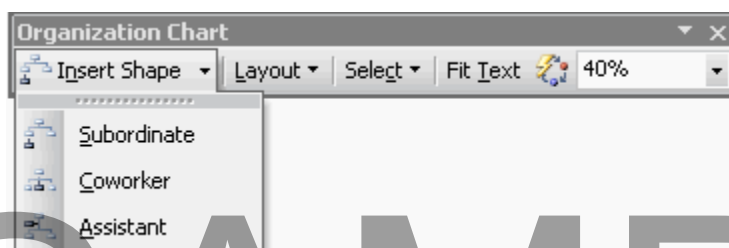
## Working with Organization Charts

### Inserting Organization Chart Shapes

- Organization Chart shapes include **Superior**, **Assistant**, **Subordinate**, and **Coworker**.

### To insert an Organization Chart shape

- Select the shape you want to add a new shape **next to** or **below**.
- Click the down arrow on the **Insert Shape** button on the **Organization Chart** toolbar.
- Select the desired shape:



### Deleting Organization Chart Shapes

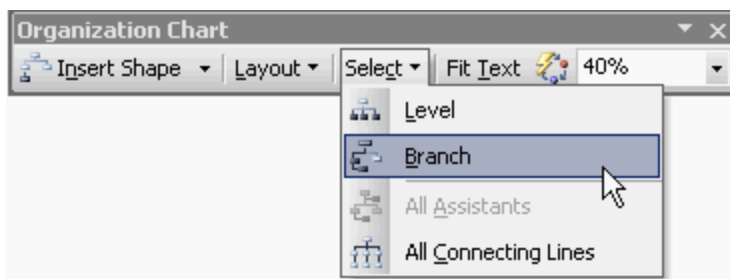
- Select the shape you want to **delete**.
- Press the **Delete** key on your keyboard.

### Selecting Related Organization Chart Shapes

- The **Select** button on the **Organization Chart** toolbar makes it easy to select multiple shapes by offering hierarchical selection options. You can select a **Level**, **Branch**, **All Assistants**, or **All Connecting Lines**.

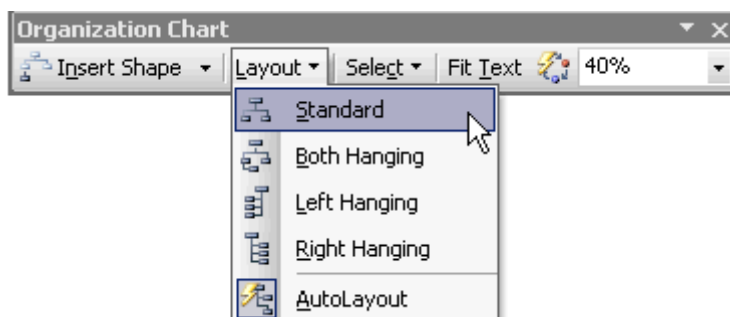
### To select hierarchically related shapes

- Select the shape for the relevant hierarchy.
- Click the down arrow on the **Select** button on the **Organization Chart** toolbar.
- Select the hierarchical selection you want:



### Changing the Organization Chart Layout

- Select the highest level shape (manager) of the **branch** you want to apply the new Organization Chart layout to.
- Click the down arrow on the **Layout** button on the **Organization Chart** toolbar.
- Select the desired layout:

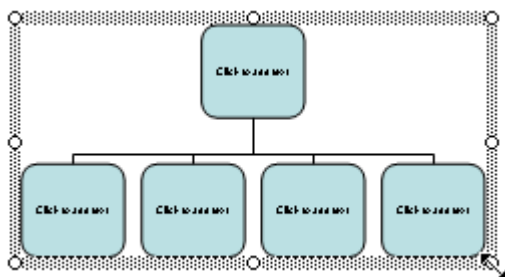


### Resizing an Organization Chart

- The Organization Chart has a **border** and **resizing handles**.

### To increase or decrease the border and organisation chart size simultaneously

- Click and drag a **corner** resizing handle:



### To proportionately increase or decrease the border and organisation chart size simultaneously

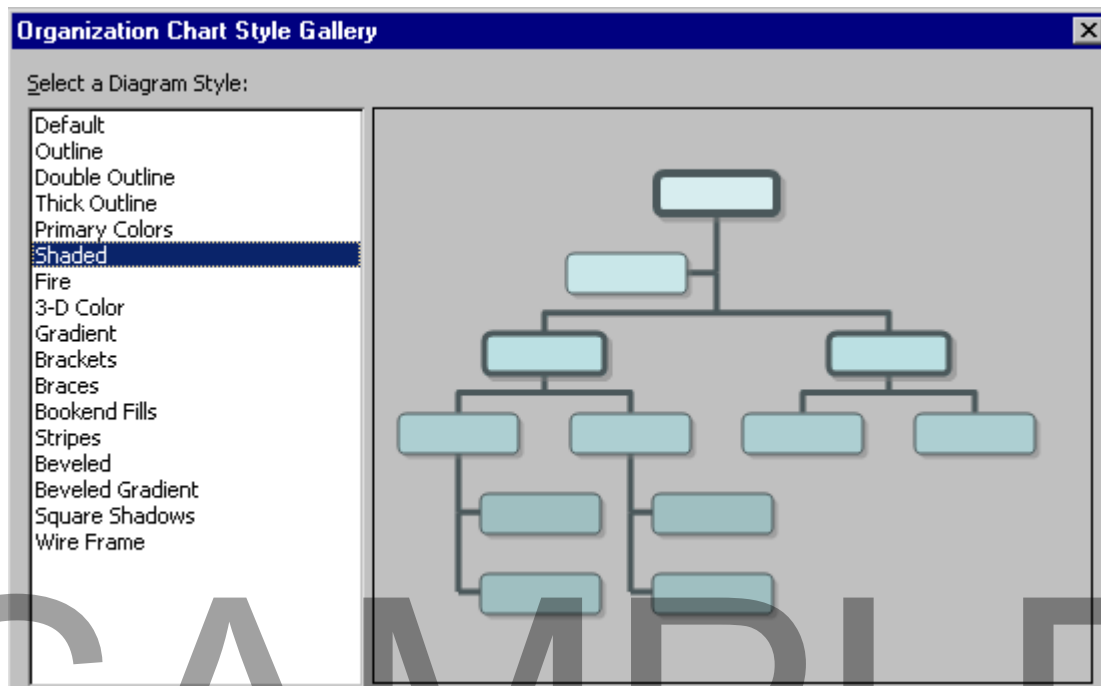
- From the main menu, choose **Format > Organizational Chart**.
- Select the **Size** tab.
- Adjust the **Scale Height** and **Width** percentages.

### Adding a Preset Design Scheme to an Organization Chart

- Click the **AutoFormat** button on the **Organization Chart** toolbar:



- In the opened **Organization Chart Style Gallery** dialog box, choose a diagram style:



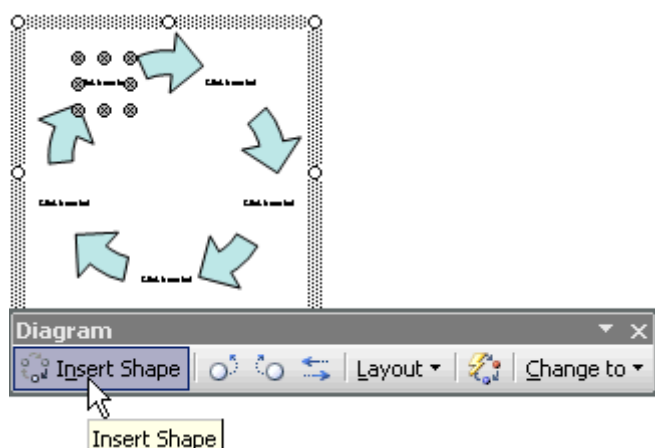
- Click **OK**.

## Working with Diagrams

### Adding Diagram Shapes

- Select the diagram which you want to add shapes to.

- Click the **Insert Shape** button on the **Diagram** toolbar:



---

### Deleting Diagram Shapes

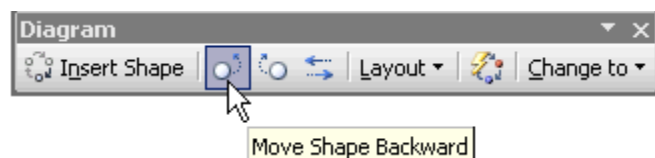
- Select the shape you want to **delete**.
- Press the **Delete** key on your keyboard.

---

### Moving Shapes within a Diagram

- Select the shape in the diagram you want to move.
- Click the **Move Shape Backward** button on the **Diagram** toolbar

**OR** click the **Move Shape Forward** button on the **Diagram** toolbar:



---

### Reversing a Diagram

- Click the **Reverse Diagram** button on the **Diagram** toolbar:



---

### Resizing a Diagram

- A Diagram has a **border** and **resizing handles**.

---

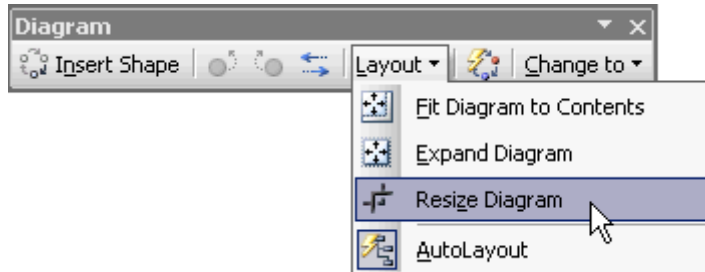
### To increase or decrease the border and diagram size simultaneously

- Click and drag a **corner** resizing handle.

---

**To proportionately increase or decrease the border and diagram size simultaneously.**

- Click the **Layout** button on the **Diagram** toolbar.
- Select **Resize Diagram**:



- Click and drag a **corner** resizing handle.

---

**To decrease the (white) space in the diagram border**

- Click the **Layout** button on the **Diagram** toolbar.
- Select **Fit Diagram to Contents**.

---

**To increase the (white) space in the diagram border**

- Click the **Layout** button on the **Diagram** toolbar.
- Select **Expand Diagram**.

---

**Adding a Preset Design Scheme to a Diagram**

- Click the **AutoFormat** button on the **Diagram** toolbar. This opens the **Diagram Style Gallery** dialog box.
- Select the diagram style you want.
- Click **Apply**.

---

**Switching Between Diagram Types**

- Click the **Change to** button on the **Diagram** toolbar.
- Select the diagram type you want:



**Note:** To change diagram types, **AutoFormat** must be on. If AutoFormat is off, PowerPoint will give you the option to turn it on when you switch between diagram types.

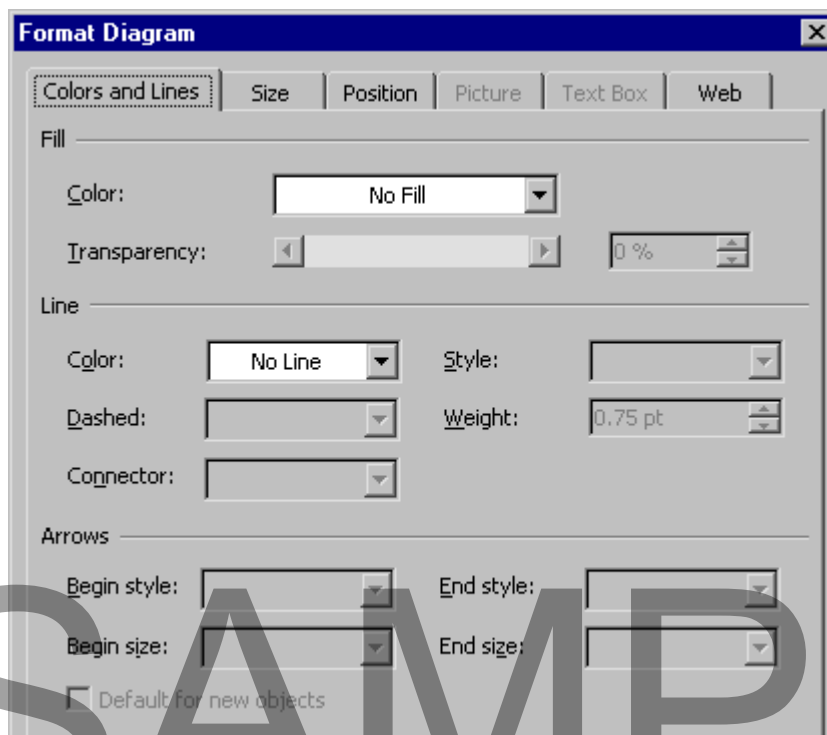
## Formatting Organization Charts and Diagrams

### Entering Text in an Organization Chart or Diagram

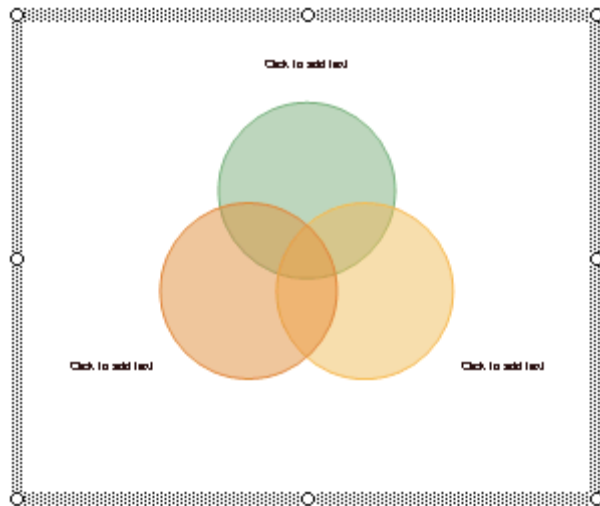
- **Click** in the Organization Shape or Diagram **text placeholders** and begin typing.

### Formatting an Organization Chart or Diagram

- Double-click on the **drawing canvas** (the white space between the **organisation chart** or **diagram** and the **border**). This will open the **Format Organization Chart** or **Format Diagram** dialog box:



- Make the formatting changes you want:



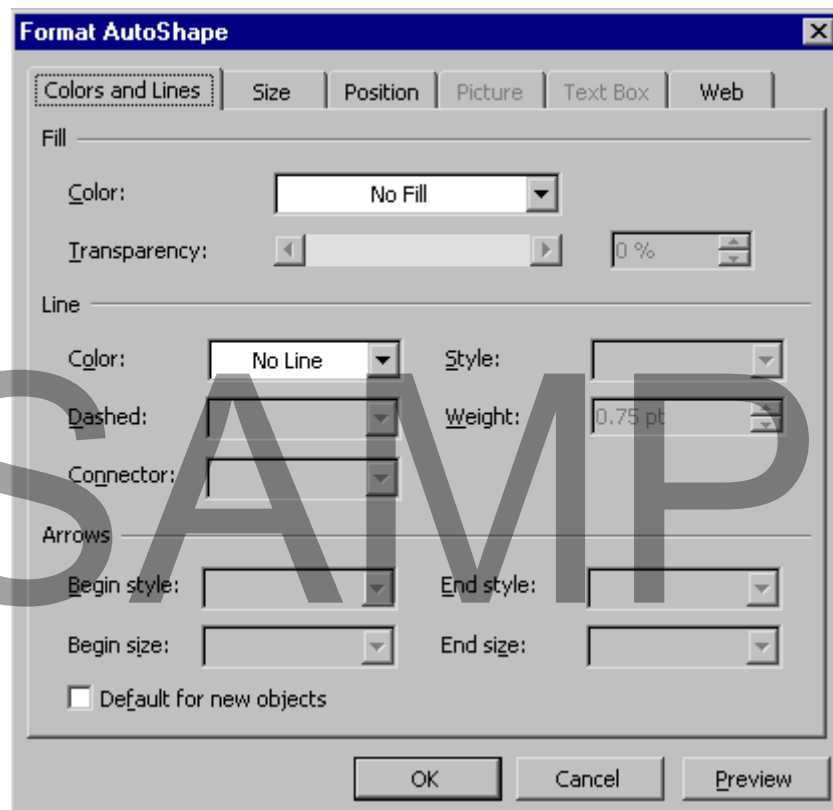
- Click **OK**.

**Note:** Changes made in the **Format Organization Chart** or **Format Diagram** dialog box apply to the entire organization chart or diagram.

---

### Formatting Organization Chart or Diagram AutoShapes

- Double-click on an organization chart or diagram **shape**. This will open the **Format AutoShape** dialog box:



- Make the formatting changes you want.

- Click **OK**.

**Note:** Changes made in the **Format AutoShape** dialog box apply only to the shape/s selected. If you have applied a **Preset Design Scheme** you may not be able to make custom changes.

---

### Deleting an Organization Chart or Diagram

- Click the border of the organisation chart or diagram.
- Press the **Delete** key on your keyboard.

## Review Questions

### How would you:

- Insert an Organization Chart?
- Insert a Cycle Diagram?
- Insert a Radial Diagram?
- Insert a Pyramid Diagram?
- Insert a Venn Diagram?
- Insert a Target Diagram?
- Insert Organization Chart Shapes?
- Delete Organization Chart Shapes?
- Select Related Organization Chart Shapes?
- Change the Organization Chart Layout?
- Resize an Organization Chart?
- Add a Preset Design Scheme to an Organization Chart?
- Add Diagram Shapes?
- Delete Diagram Shapes?
- Move Shapes within a Diagram?
- Reverse a Diagram?
- Resize a Diagram?
- Add a Preset Design Scheme to a Diagram?
- Switch Between Diagram Types?
- Enter Text in an Organization Chart or Diagram?
- Format an Organization Chart or Diagram?
- Format Organization Chart or Diagram AutoShapes?
- Delete an Organization Chart or Diagram?

## Using Tables and Charts

When you have completed this learning module you will have seen how to:

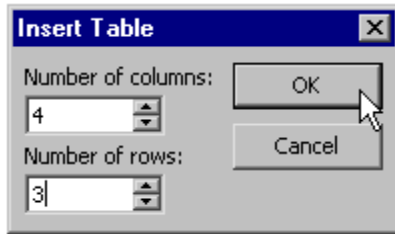
- Insert a Table
- Draw a Table
- Import a Table
- Insert Columns and Rows
- Delete Columns and Rows
- Split Cells
- Merge Cells
- Erase Lines
- Distribute Columns and Rows
- Align Text in Cells
- Change Border Style
- Change Border Width
- Change Border Colour
- Show or Hide Borders and Lines
- Delete a Table
- Insert a Chart
- Embed and Link an Excel Chart
- Activate a Chart
- Enter Data in the Datasheet
- Import Data
- Apply a New Chart Type
- Apply a New Chart Type to a Data Series
- Change the Default Chart Type
- Create your own Chart Type
- Modify Chart Items
- Add Titles to a Chart
- Show or Hide Chart Axes
- Display Chart Gridlines
- Add a Legend to a Chart
- Add Data Labels to a Chart
- Add Data Labels to a Data Series or Data Point
- Display a Data Table in a Chart
- Add a Trendline
- Delete a Chart

### Adding Tables

---

#### Inserting a Table

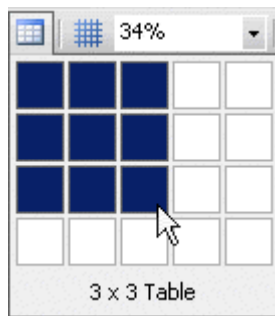
- From the main menu, select **Insert > Table**. This opens the **Insert Table** dialog box:



- Select the number of columns and rows you want by clicking on the up or down arrows.
- Click **OK**

**OR** click the **Insert Table** button on the **Standard** toolbar.

- Drag your mouse over the rows and columns until you have your desired table size:



- Left click to insert the table.

---

## Drawing a Table

- Drawing a table allows you to create a more complex table.

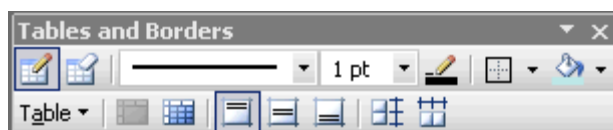
---

### To draw a table

- Click the **Tables and Borders** button on the **Standard** toolbar:

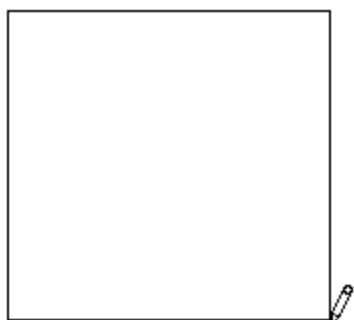


- This opens the **Tables and Borders** toolbar:

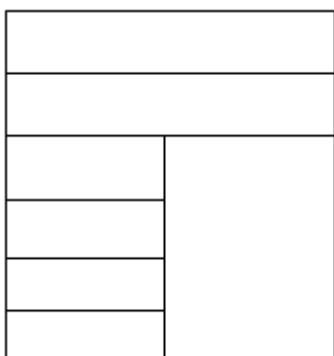


- Click the **Draw Table** button on the **Tables and Borders** toolbar.

- Drag your mouse **diagonally** over the slide to set the table border size:



- Drag your mouse **vertically** or **horizontally** within the table border to create rows and columns:



---

### Embedding a Microsoft Word Table

- Embedding a Microsoft Word table is only necessary when you need more powerful table formatting tools.

---

#### To embed a Microsoft Word table

- From the main menu, select **Insert > Object**. This opens the **Insert Object** dialog box.
- Check **Create new**.
- Select **Microsoft Word Document**.
- Click **OK**.
- Create the table you want.

**Note:** Linked and embedded objects are discussed in more detail later on in this manual.

---

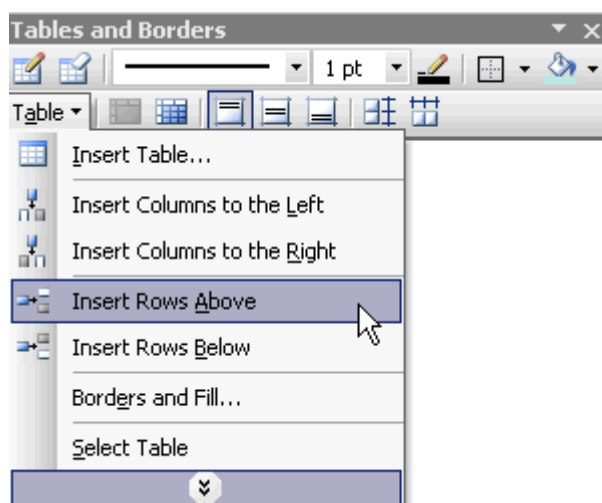
### Working with Columns and Rows

---

#### Inserting Columns and Rows

- Click in the **table area** you want the row or column to be inserted.

- Click the down arrow on the **Table** button on the **Tables and Borders** toolbar.
- Select a row or column to insert:

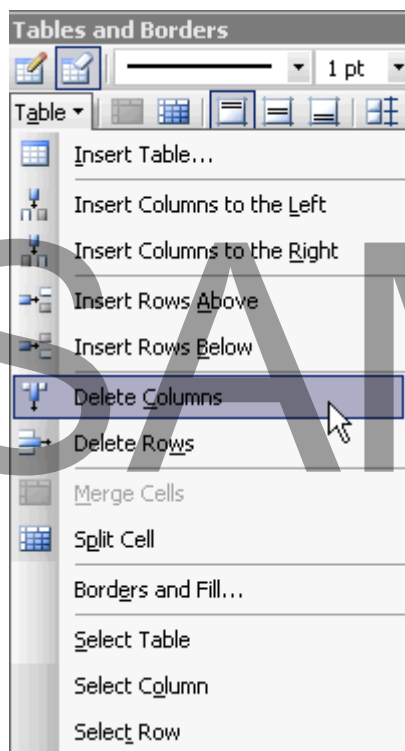


---

## Deleting Columns and Rows

### To delete a column

- Click in the column you want to delete.
- Click the down arrow on the **Table** button on the **Tables and Borders** toolbar, and expand **Options**.
- Select **Delete Columns**:



### To delete a row

- Click in the row you want to delete.
- Click the down arrow on the **Table** button on the **Tables and Borders** toolbar.
- Select **Delete Rows**.

### Splitting Cells

- Click in the cell you want to **split**.
- Click the **Split Cell** button on the **Tables and Borders** toolbar:



**OR** click the down arrow on the **Table** button on the **Tables and Borders** toolbar.

- Select **Split Cell**.

### Merging Cells

- Select the cells you want to **merge**.
- Click the **Merge Cells** button on the **Tables and Borders** toolbar:

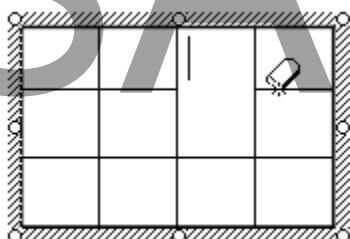


**OR** click the down arrow on the **Table** button on the **Tables and Borders** toolbar.

- Select **Merge Cells**.

### Erasing Lines

- Click the **Eraser** button on the **Tables and Borders** toolbar.
- Click the line/s you want to erase:



- After you have finished erasing the lines, click the eraser button again to turn it off.

## Distributing Columns and Rows

- Merging cells, splitting cells, and erasing lines can make the distribution of columns and rows uneven.

### To distribute columns evenly

- Click in the table area.
- Click the **Distribute Columns Evenly** button on the **Tables and Borders** toolbar:



### To distribute rows evenly

- Click in the table area.
- Click the **Distribute Rows Evenly** button on the **Tables and Borders** toolbar:



## Aligning Text in Cells

- By default, text in a cell is aligned to the top of the cell.

### To align text to the top of the cell

- Select the cell for which you want to align text.
- Click the **Align Top** button on the **Tables and Borders** toolbar.

### To align text to the centre of the cell

- Select the cell for which you want to align text.
- Click the **Center Vertically** button on the **Tables and Borders** toolbar.

### To align text to the bottom of the cell

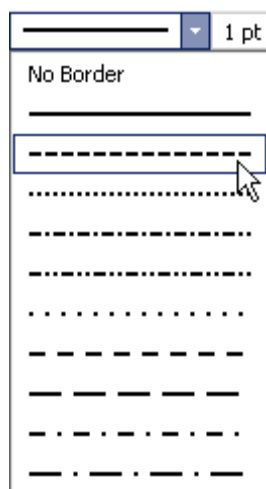
- Select the cell for which you want to align text.
- Click the **Align Bottom** button on the **Tables and Borders** toolbar.

## Formatting Tables

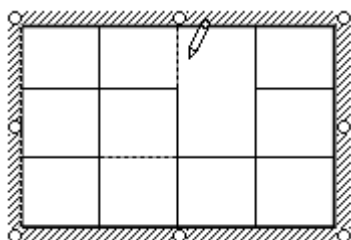
---

## Changing Border Style

- Click the down arrow on the **Border Style** button on the **Tables and Borders** toolbar:



- Select the border style you want. Your cursor will turn into a **pencil**.
- Click the lines you want to change style:



---

## Changing Border Width

- Click the down arrow on the **Border Width** button on the **Tables and Borders** toolbar.
- Select the border width you want. Your cursor will turn into a **pencil**.
- Click the lines where you want to change the width.

---

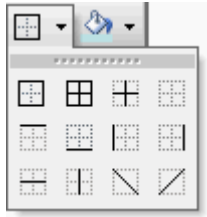
## Changing Border Colour

- Click the **Border Color** button on the **Tables and Borders** toolbar.
- Select the border colour you want. Your cursor will turn into a **pencil**.
- Click the lines you want to change colour.

---

## Showing or Hiding Borders and Lines

- Select the cell/s you want to add or hide a border.
- Click the down arrow on the **Outside Borders** button on the **Tables and Borders** toolbar:



- Select a border option.

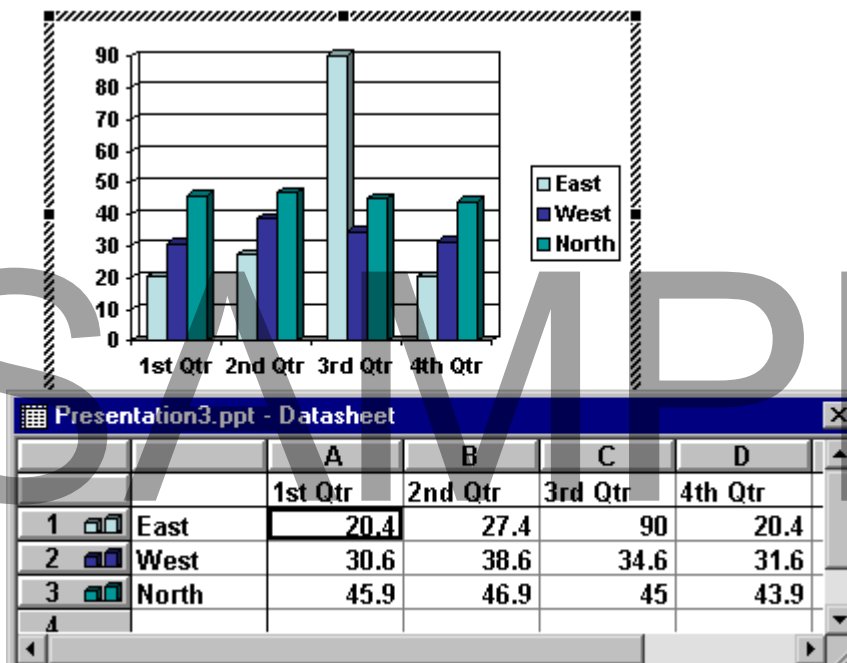
## Deleting a Table

- Click the border of the table you want to **delete**.
- Press the **Delete** key on your keyboard.

## Adding Charts

### Inserting a Chart

- From the main menu, select **Insert > Chart**
- OR* click the **Insert Chart** button on the slide **Content** layout
- OR* click the **Insert Chart** button on the **Standard** toolbar.
- This opens the Microsoft Graph **chart** and **datasheet**:



- When working on a chart, Microsoft Graph offers its own toolbar buttons and menus:



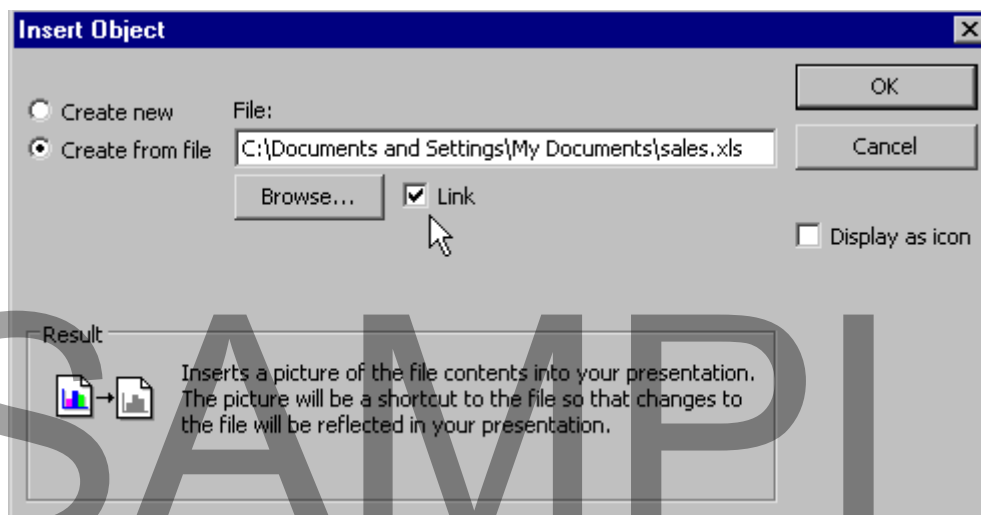
## Embedding and Linking an Excel Chart

### To create an embedded Excel chart

- From the main menu, select **Insert > Object**. This opens the **Insert Object** dialog box.
- Check the **Create new** box.
- Select **Microsoft Excel Chart**.
- Click **OK**.
- Create the chart you want.

### To link an Excel chart

- From the main menu, select **Insert > Object**. This opens the **Insert Object** dialog box.
- Check the **Create from file** box.
- Click the **Browse...** button and locate the Excel chart you want.
- Check the **Link** box:



- Click **OK**.
- Create the chart you want.

**Note:** Linked and embedded objects are discussed in more detail later on in this manual.

## Entering Data

### Activating a Chart

- Once you have inserted a chart, click outside of the chart area to return to the slide. If you want to edit the chart, the chart area must be **active**.

### To activate a chart


- Double-click on the chart.

### Entering Data in the Datasheet

- To add or change chart data, edit the **Datasheet**.

		A	B	C	D	E
		1st Qtr	2nd Qtr	3rd Qtr	4th Qtr	
1	East	20.4	27.4	90	20.4	
2	West	30.6	38.6	34.6	31.6	
3	North	45.9	46.9	45	43.9	
4						


### To view the datasheet

- From the main menu, select **View > Datasheet**  
**OR** click the **View Datasheet** button on the **Standard** toolbar: 
- Enter your data in the Datasheet.

### Importing Data

- Data can be imported from Excel worksheets, workbooks, and charts; delimited text files; and Lotus 1-2-3 files.

### To import data

- From the main menu, select **Edit > Import File**  
**OR** click the **Import File** button on the **Standard** toolbar: 
- Locate the file containing the data you want to import.

**Note:** If you import data from Excel, you will be prompted to select a **worksheet** or **range**. If you import data from a text file, you will be taken through a **Text Import Wizard**.

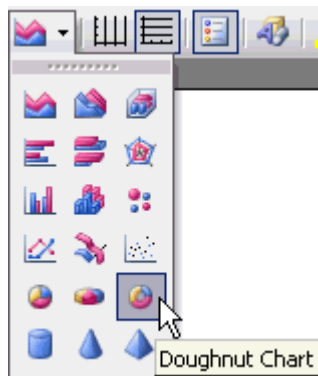
## Changing the Chart Type

### Applying a New Chart Type

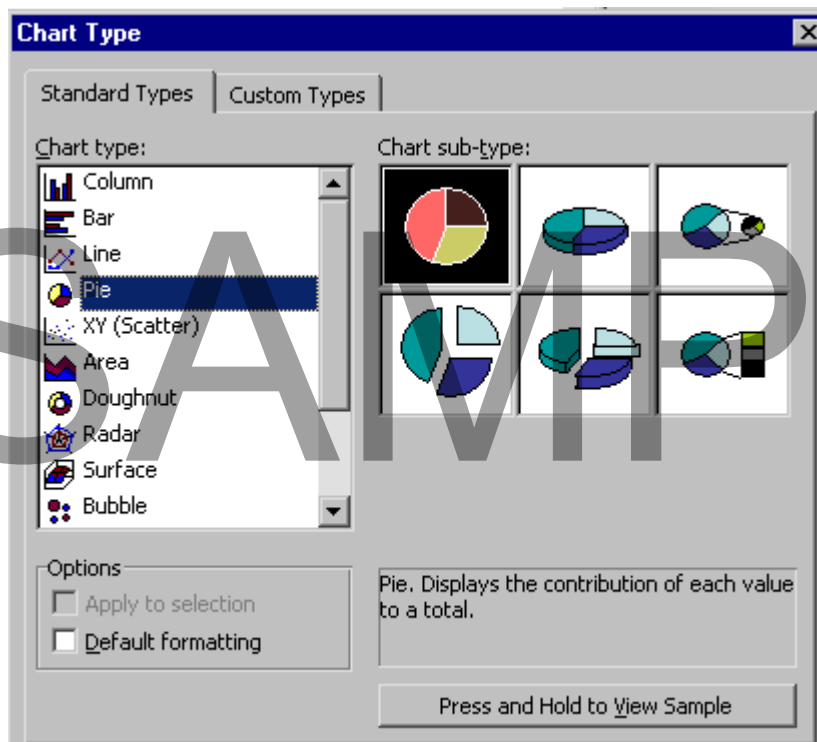
- Chart types include **Pie**, **Column**, **Bar**, **Line**, **Cylinder**, **Cone**, **Pyramid** and many others.

### To change the chart type

- Click the down arrow on the **Chart type** button on the **Standard** toolbar:



- Select a chart type  
**OR** from the main menu, select **Chart > Chart Type**.
- Click the **Standard Types** or **Custom Types** tab:



- Select the chart type you want.
- Click **OK**.

**Note:** If you select a Standard Type chart, you also have a choice of chart sub-types.

---

### Applying a New Chart Type to a Data Series

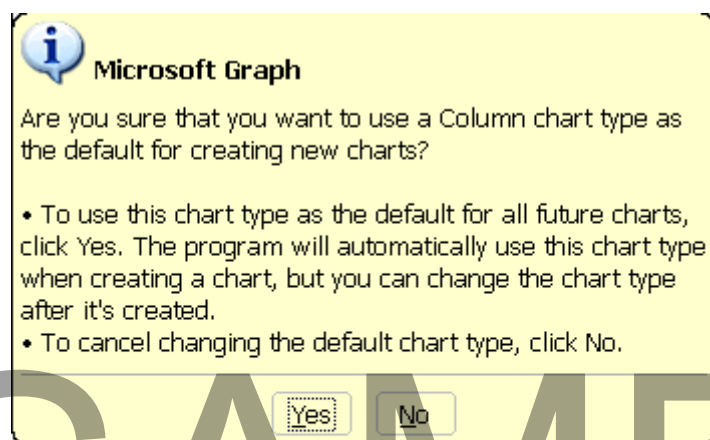
- Select the data series you want to apply a new chart type.
- From the main menu, select **Chart > Chart Type**.
- Make sure the **Apply to selection box** is checked.
- Click the **Standard Types** or **Custom Types** tab.
- Select the chart type you want.
- Click **OK**.

**Note:** You cannot combine **2-D** and **3-D** chart types.

---

### Changing the Default Chart Type

- From the main menu, select **Chart > Chart Type**.
- Click the Standard Types or Custom Types tab.
- Select the chart type you want.
- Click the **Set as default chart** button. This opens the **Microsoft Graph Office Assistant** dialog box:



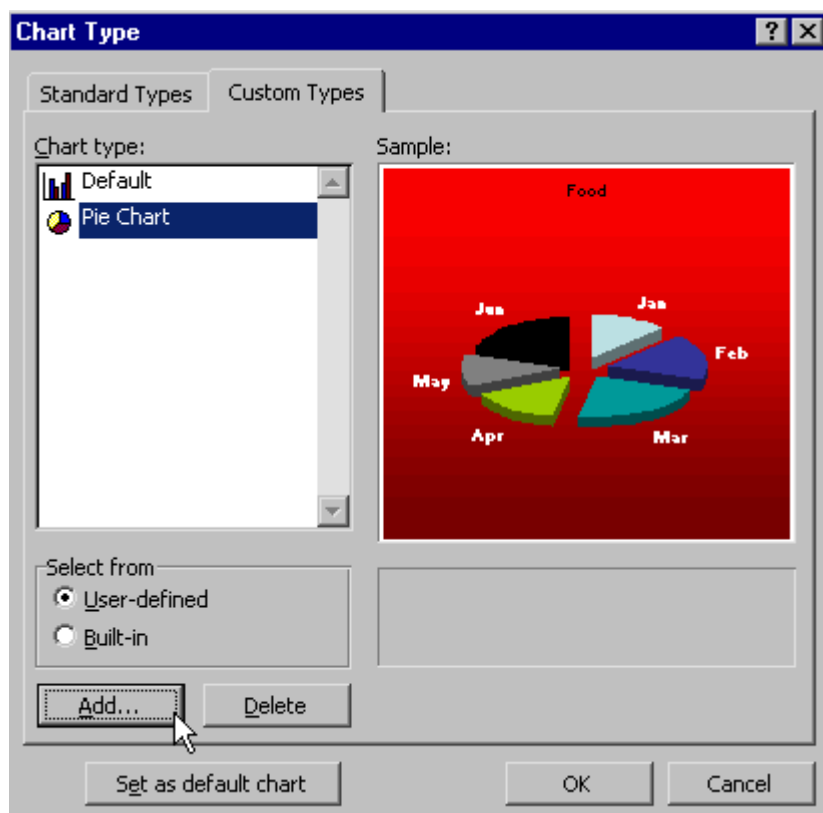
- Click the **Yes** button to change the default chart type.
- Click **OK**.

---

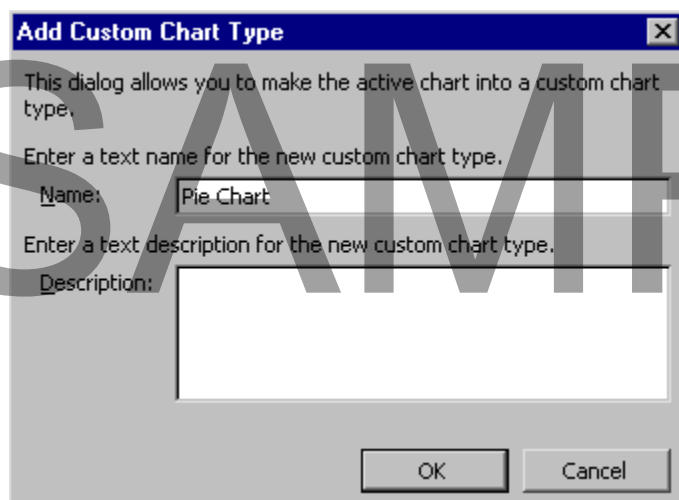
### Creating your own Chart Type

- From the main menu, select **Chart > Chart Type**.

- Click the Standard Types or Custom Types tab.
- Select the chart type you want to customise.
- Make changes to the chart.
- From the main menu, select **Chart > Chart Type**.
- Click the **Custom Types** tab.
- Check the **User-defined** box.
- Click **Add**:



- This opens the **Add Custom Chart Type** dialog box:



- Enter a **name** and **description** for your customised chart.
- Click **OK**.

## Customising Charts

---

### Modifying Chart Items

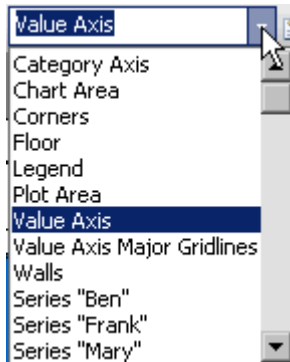
- Chart items include **Axes**, **Data Series**, **Data Labels**, **Legends**, and other items. To modify a specific chart item, it has to be selected first.

---

#### To select chart items

- Click directly on the chart item you want

**OR** click the down arrow on the **Chart Objects** drop-down menu and select the chart item you want:



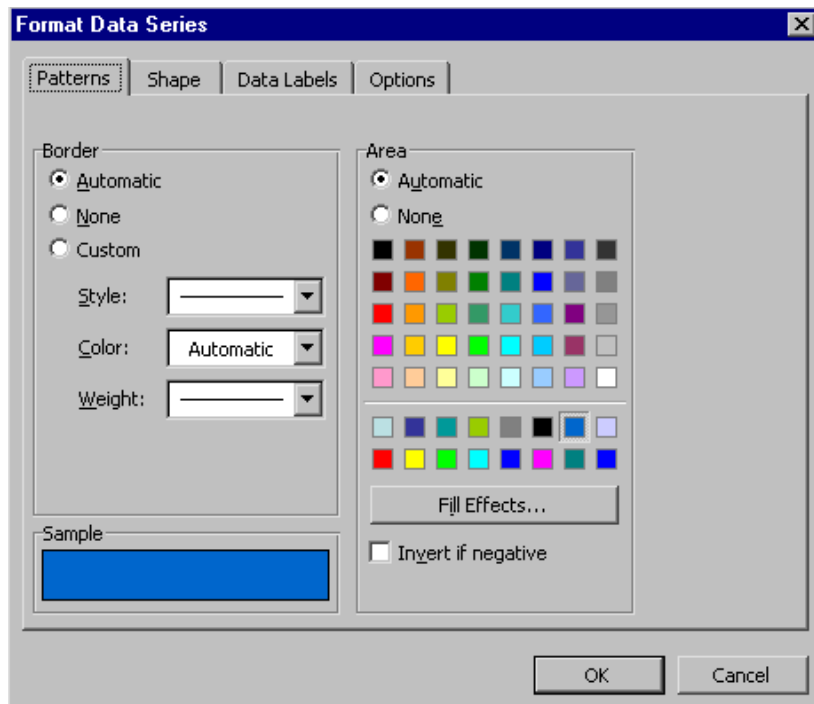
---

#### To format chart items

- Double-click the item/area you want to format.

# SAMPLE

- This will open the relevant dialog box:



- Make the changes you want.
- Click **OK**.

### Formatting 3D Charts

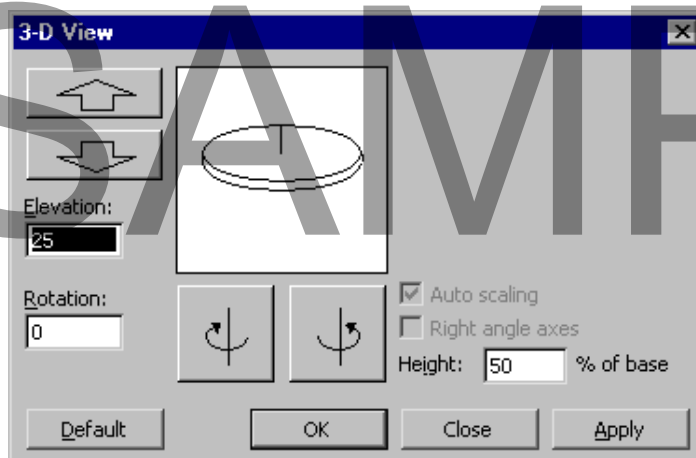
- If you have selected a **3D chart**, the following formatting options are available:

**Elevation** – the elevation level of the chart.

**Rotation** – the rotation of the chart around a vertical axis

**Perspective** – the depth of the chart.

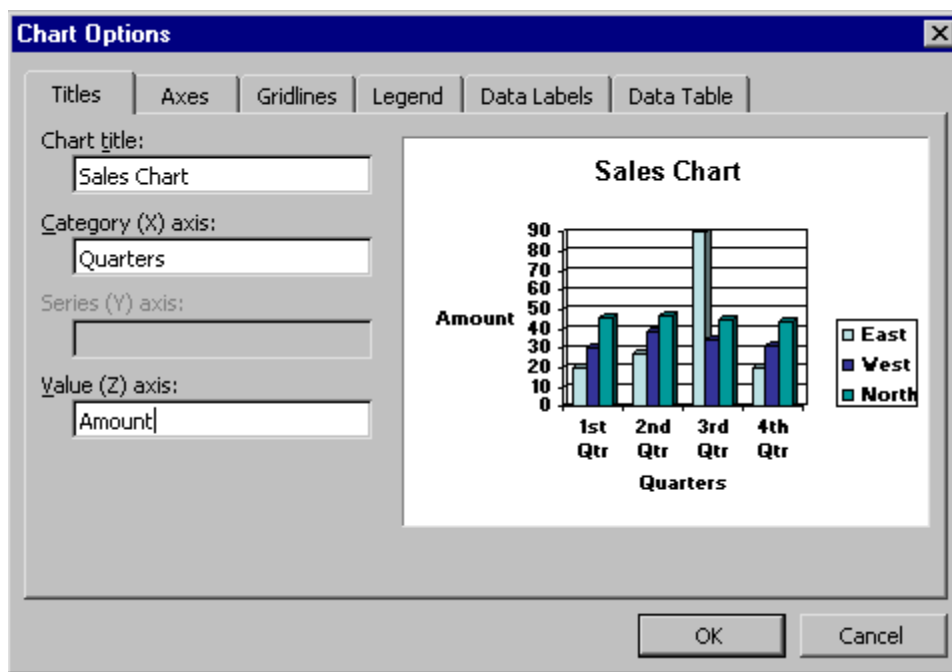
**Height** – the height of the chart in relation to the base.



- Click **Apply**, and **OK**.

## Adding Titles to a Chart

- From the main menu, select **Chart > Chart Options**.
- Click the **Titles** tab.
- Enter a name for the **Chart title** or **Category axes**:



- Click **OK**.

## Showing or Hiding Chart Axes

- From the main menu, select **Chart > Chart Options**.
- Click the **Axes** tab.
- Check or uncheck the axes you want to show or hide.
- Click **OK**.

## Displaying Chart Gridlines

- From the main menu, select **Chart > Chart Options**.
- Click the **Gridlines** tab.
- Check the gridlines you want displayed.
- Click **OK**.

## Adding a Legend to a Chart

- From the main menu, select **Chart > Chart Options**.
- Click the **Legend** tab.
- Check the **Show legend** box.
- Select the legend placement you want.

- Click **OK**.

---

### **Adding Data Labels to a Chart**

- From the main menu, select **Chart > Chart Options**.
- Click the **Data Labels** tab.
- Select the data labels you want.
- Click **OK**.

---

### **Adding Data Labels to a Data Series or Data Point**

- Select the **data series** or **data point** you want to add data labels.
- From the main menu, select **Format > Selected Data Series**

**OR** select **Format > Selected Data Point**.

- Click the **Data Labels** tab.
- Select the data labels you want to apply to the **data series** or **data point**.
- Click **OK**.

---

### **Displaying a Data Table in a Chart**

- From the main menu, select **Chart > Chart Options**.
- Click the **Data Table** tab.
- Check the **Show data table** box.
- Click **OK**.

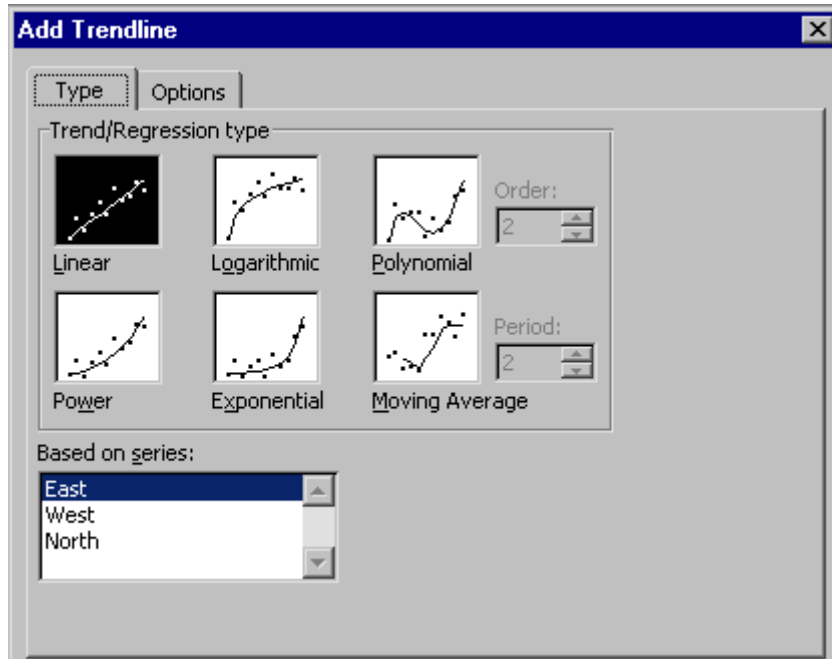
**Note:** You can display a data table for **line**, **area**, **column** and **bar** charts.

---

### **Adding a Trendline**

- A **Trendline** is only available for charts without a 3D effect.
- From the main menu, select **Chart > Add Trendline**. This opens the **Add Trendline** dialog box:

SAMPLE



- Select the trendline type you want.
- Select the data series you want the trendline based upon.
- Click **OK**.

---

## Deleting a Chart

- Return to the slide by clicking outside the chart.
- Click on the chart to select it.
- Press the **Delete** key on your keyboard.

## Review Questions

### How would you:

- Insert a Table?
- Draw a Table?
- Import a Table?
- Insert Columns and Rows?
- Delete Columns and Rows?
- Split Cells?
- Merge Cells?
- Erase Lines?
- Distribute Columns and Rows?
- Align Text in Cells?
- Change Border Style/Width/Colour?
- Show or Hide Borders and Lines?
- Delete a Table?
- Insert a Chart?
- Embed and Link an Excel Chart?

- Activate a Chart?
- Enter Data in the Datasheet?
- Import Data?
- Apply a New Chart Type to a Data Series?
- Change the Default Chart Type?
- Create your own Chart Type?
- Modify Chart Items?
- Add Titles to a Chart?
- Show or Hide Chart Axes?
- Display Chart Gridlines?
- Add a Legend to a Chart?
- Add Data Labels to a Chart, Data Series or Data Point?
- Display a Data Table in a Chart?
- Add a Trendline?
- Delete a Chart?

SAMPLE

## Embedding and Linking Objects

When you have completed this learning module you will have seen how to:

- Link Objects from Part of a File
- Link Objects from an Entire File
- Change how Objects are Displayed
- Update Links Automatically or Manually
- Open the Source File
- Edit the Source File
- Change the Source File Location
- Break a Link
- Create a New Embedded Object
- Embed an Object from Part of a File
- Embed an Object from an Entire File
- Edit an Embedded Object
- Embed Fonts
- Link to another Slide or Custom Presentation
- Link to an Existing File or Web Page
- Link to a New File
- Link to an E-mail Address
- Link from an Action Button
- Change a Hyperlink
- Remove a Hyperlink

## Working with Linked Objects

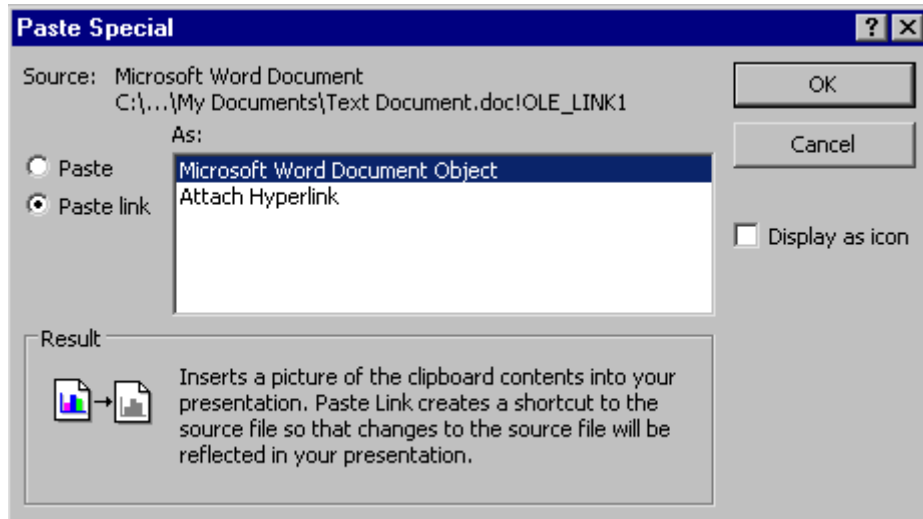
### Using Linked Objects

- A **linked object** is created in a **source file** and inserted into a presentation. The inserted file **does not** become a part of the presentation. The two files maintain a connection, and any change made to the source file is reflected in the linked file.

**Note:** The primary benefit of linking an object is keeping the presentation file size down.

### Linking Objects from Part of a File

- Open the file containing the information you want to link.
- Select the information you want to link.
- Click the **Copy** or **Cut** button on the **Standard** toolbar.
- Go to the slide where you want to insert your information.
- From the main menu, select **Edit > Paste Special**. This opens the **Paste Special** dialog box:

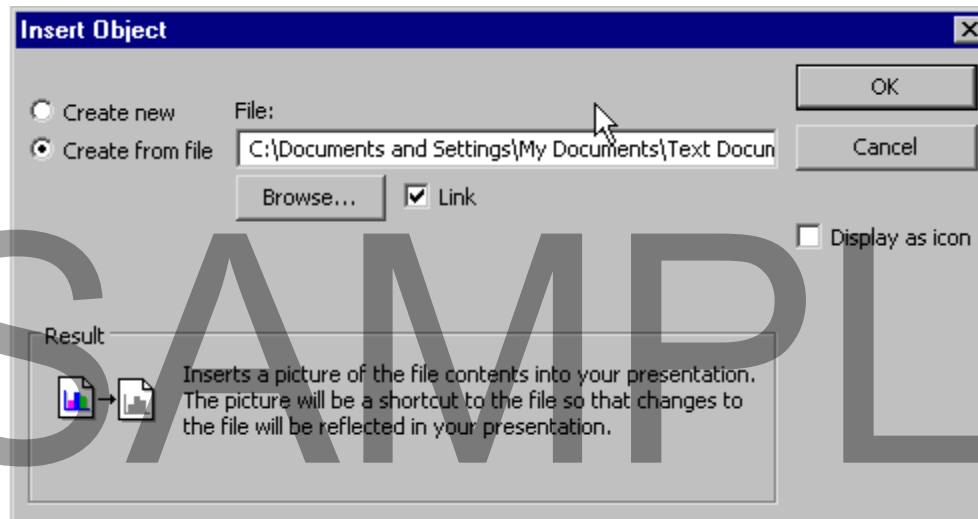


- Check the **Paste link** box.
- Select the file format you want to link from the **As** box.
- Click **OK**.

---

### Linking Objects from an Entire File

- From the main menu, select **Insert > Object**. This opens the **Insert Object** dialog box.
- Check the **Create from file** box.
- Click the **Browse** button and locate the object you want to insert.
- Check the **Link** box.
- Click **OK**:



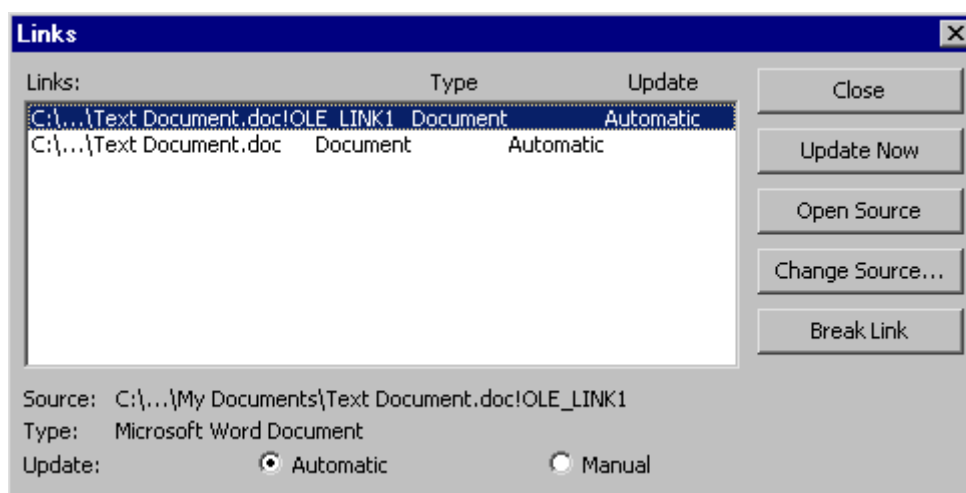
---

### Updating Links Automatically or Manually

- If you choose to update links **automatically**, objects are automatically updated when the source file is updated or when the presentation is opened. If you choose to update links **manually**, objects are only updated when you give instructions to do so.

### To set automatic or manual update settings

- From the main menu, select **Edit > Links**. This opens the **Links** dialog box.
- Click the link you want to update.
- Check the **Automatic** or **Manual** option button:



### To manually update a link

- Click the link you want to update.
- Click Update Now.
- Click **Close**.

### Opening the Source File

- Double-click on the linked object

*OR* select the linked object.

- From the main menu, select **Edit > Linked Document Object > Open**

*OR* select the linked object.

- From the main menu, select **Edit > Links**. This opens the **Links** dialog box.
- Click the **Open Source** button.

### Editing the Source File

- Select the object linked to the source file you want to edit.
- From the main menu, select **Edit > Linked Document Object > Edit**. This opens the source file in its source program.
- Make changes to the source file.
- From the main menu, select **File > Exit** when you are finished.

## Changing the Source File Location

- Changing the source file location is necessary when the source file has been moved.

### To change the source file location

- Select the linked object.
- From the main menu, select **Edit > Links**. This opens the **Links** dialog box.
- Click the **Change Source** button.
- Select the new source file location.
- Click **OK**.

## Breaking a Link

- Select the linked object.
- From the main menu, select **Edit > Links**. This opens the **Links** dialog box.
- Click the **Break Link** button.
- Click **OK**.

## Working with Embedded Objects

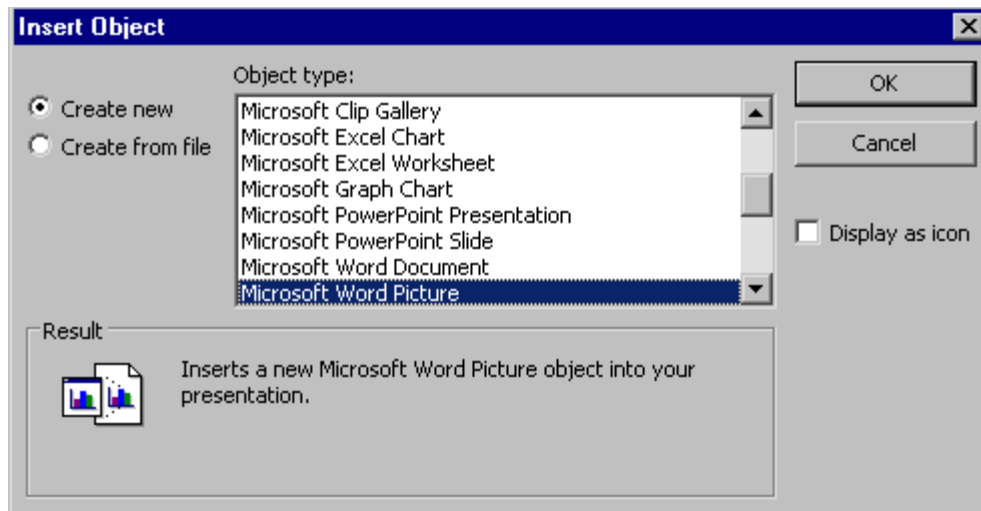
### Using Embedded Objects

- An **embedded object** is created in a **source file** and inserted into a presentation. The inserted file **becomes** a part of the presentation. Changing the source file does not change the embedded file.

### Creating a New Embedded Object

- From the main menu, select **Insert > Object**. This opens the **Insert Object** dialog box.
- Check the **Create new** box:

SAMPLE



- Select the type of object you want to create.
- Click **OK**.
- Create the object you want.

---

### Embedding an Object from Part of a File

- Open the file containing the information you want to embed.
- Select the information you want to embed.
- Click the **Copy** or **Cut** button on the **Standard** toolbar.
- Go to the slide where you want to insert your information.
- From the main menu, select **Edit > Paste Special**. This opens the **Paste Special** dialog box.
- Check the **Paste** box.
- Select the file format you want to embed from the **As** box.
- Click **OK**.

---

### Embedding an Object from an Entire File

- From the main menu, select **Insert > Object**. This opens the **Insert Object** dialog box.
- Check the **Create from file** box.
- Click the **Browse** button and locate the object you want to embed.
- Click **OK**.

---

### Editing an Embedded Object

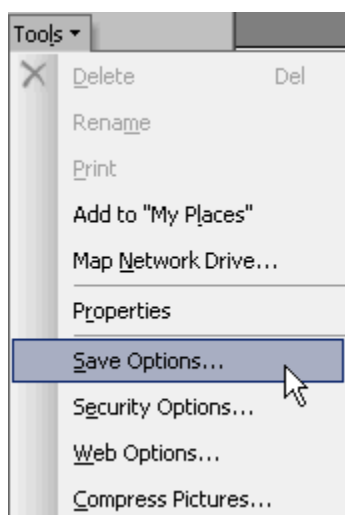
- Double-click the object you want to edit.
- Make the changes you want.
- Click outside the object to return to the slide.

## Embedding Fonts

- Saving fonts is useful if you intend to distribute your presentation for review and you want the fonts to remain the same.

### To embed fonts in your presentation

- From the main menu, select **File > Save As**. This opens the **Save As** dialog box.
- On the toolbar, select **Tools > Save Options**:



- Check the **Embed TrueType fonts** box.
- Click **OK**.

## Working with Hyperlinks

### Using Hyperlinks

- Hyperlinks can originate from **text**, an **object**, or an **action button**. You can link to other slides in your presentation, a custom presentation, an existing file or Web page, a new file, or an e-mail address.

### Linking to another Slide or Custom Presentation

- Highlight the text or object you want the hyperlink to originate from.

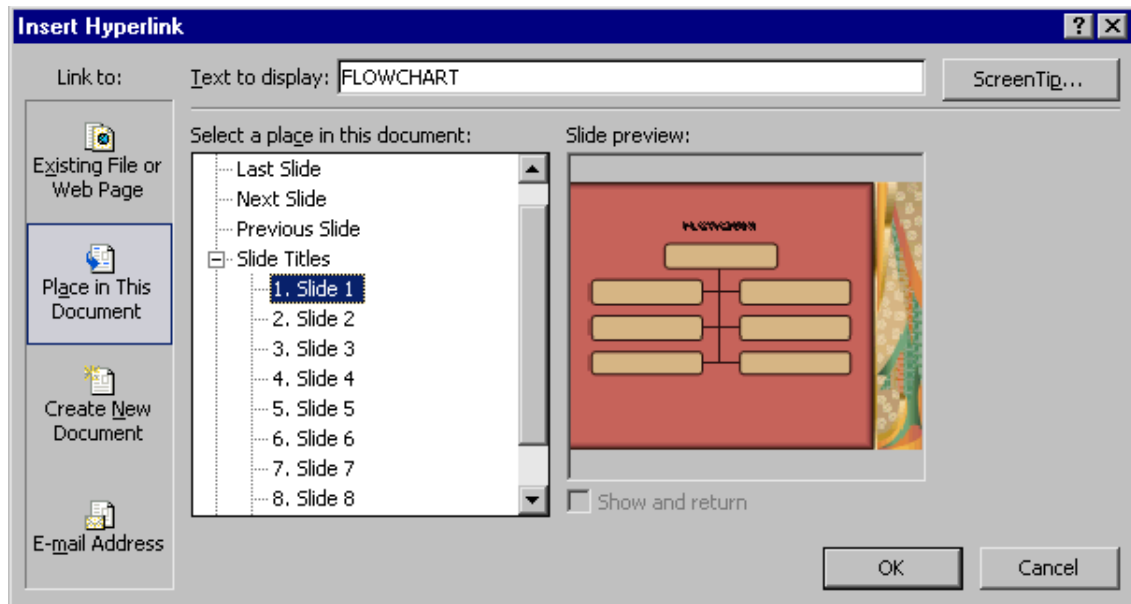
- Click the **Insert Hyperlink** button on the **Standard** toolbar:



**OR** from the main menu, select **Insert > Hyperlink**.

- This opens the **Insert Hyperlink** dialog box.
- Select **Place in This Document** in the **Link to** area.
- Select the slide or custom show you want to link to, from the **Select a place in this document** list.

- If you link to a custom show, check the **Show and return** box.
- Click **OK**:



---

### Linking to an Existing File or Web Page

- Highlight the text or object you want the hyperlink to originate from.
- Click the **Insert Hyperlink** button on the **Standard** toolbar

**OR** from the main menu, select **Insert > Hyperlink**.

- This opens the **Insert Hyperlink** dialog box.
- Select Existing File or Web Page in the Link to area.
- Locate the **file** or enter the **URL** of the Web page you want to link to.
- Click **OK**.

# SAMPLE

## End of the preview sample



This sample is approximately half of the full course. Please see the table of contents at the beginning of this document to see the full list of topics covered in the full course.

To purchase the rights to use the full training manuals at your training centre please see our web site at:

<http://www.cctglobal.com>

A courseware licence allows you to make unlimited copies for use at your training centre.

**The IT Computer Courseware Library**  
A complete library of quality training courses

Includes Windows 7 and Office 2010 Courseware

- ▶ GET THE RIGHTS TO A COMPLETE LIBRARY OF TRAINING COURSES INCLUDING ALL THE MAJOR APPLICATIONS
- ▶ HIGH QUALITY, LOW COST COURSES
- ▶ ADD YOUR OWN NAME AND LOGOS
- ▶ PRINT AS MANY COPIES AS YOU NEED
- ▶ INTRANET VERSION ALSO AVAILABLE

The advertisement features a photograph of a diverse group of people smiling, representing the target audience for the courseware.

In addition you get HTML formatted versions of each course, included w ith our printable coursew are.

**Invest in a complete Computer Courseware Library, including Windows 7 & Office 2010**

The most cost effective courseware solution for your IT training needs. Get ALL our courses, and all new courses released w ithin 12 months.

Over  
**7,000**  
Web Pages

Included when you purchase  
the 'IT Courseware Library'.

# SAMPLE